

SAFEONECHAIN

A central graphic featuring four glowing, pixelated cubes arranged in a cluster on a dark background with circuit-like patterns. The cubes have a shimmering, digital texture.

SAFO Public
Roadmap
(2022–2030)

(SAFO)

SAFO

A clear overview of the
SafeOneChain development
journey.



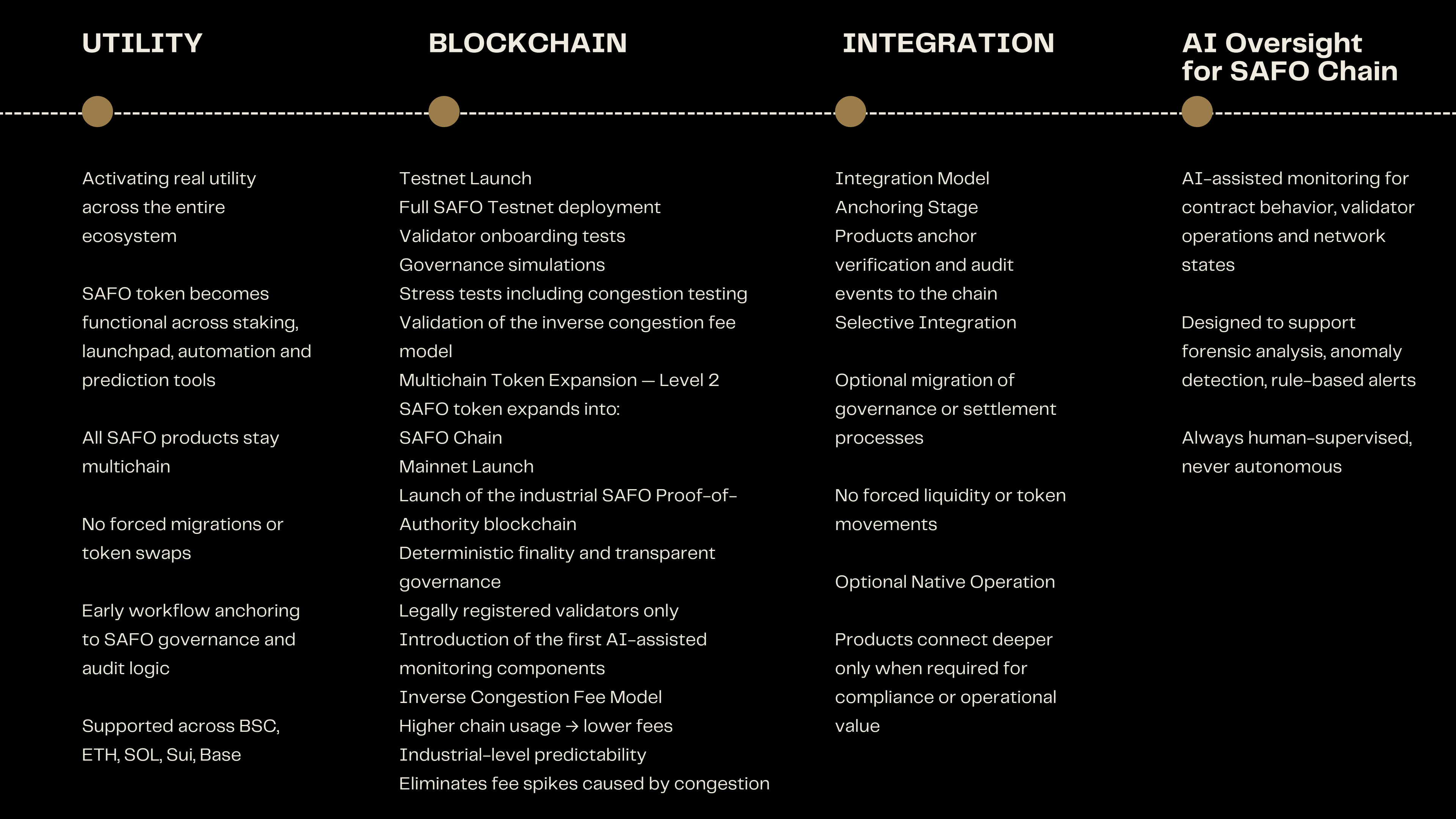
ROADMAP

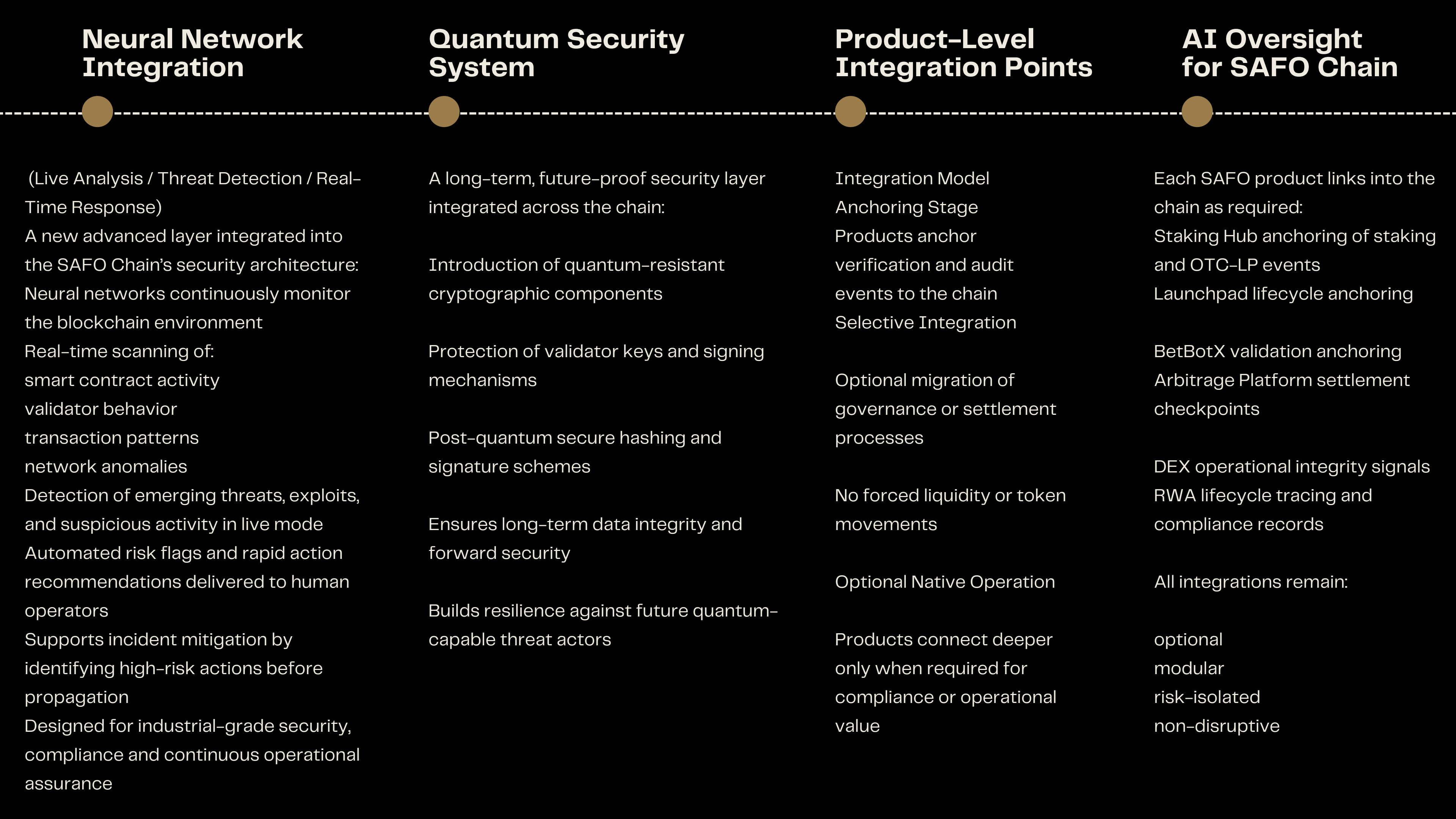
FOUNDATION

Establishing the core ecosystem
Launch of early SAFO product suite across BSC, Ethereum, Solana, Sui, Base
SAFO Staking Hub released (Staking-as-a-Service, OTC Staking-LP, NFT Staking)
SAFO Staking Launchpad goes live
SAFO token becomes multichain on BSC only in this phase
Core governance, compliance and ecosystem design completed
Financial Guarantee NFTs (Initial Introduction)
Lifelong claim coverage (no expiration)
Permanent protection linked to defined platform-related incidents
Establishes the first trust and assurance layer
No AI monitoring in this section

EXPANSION

Growing and upgrading the product landscape
Expansion of BetBotX prediction infrastructure
SAFO Bots for controlled liquidity and market-making
Full UI/UX upgrades and significant functionality improvements across ALL existing SAFO products
Modernized dashboards, enhanced automation, cross-chain interface consistency
New Product Development Planning
SAFO DEX & Perpetuals
SAFO Wallet
SAFO Crypto Credit Card
SAFO Bridge
SAFO Arbitrage Platform
SAFO Real-World Asset (RWA) Platform
Multichain Token Expansion — Level 1
SAFO token expands from BSC to:
Ethereum
Solana





GLOBAL MATURITY



Long-term industry alignment and international adoption

Growth of validator network across compliant jurisdictions

Adoption in logistics, aerospace, pharma, manufacturing and defence-aligned industries

Full activation of the SAFO RWA platform

Global partner and enterprise ecosystem expansion

Extended AI & neural network governance tooling

Establishing SafeOneChain as a long-term infrastructure layer for regulated global industries

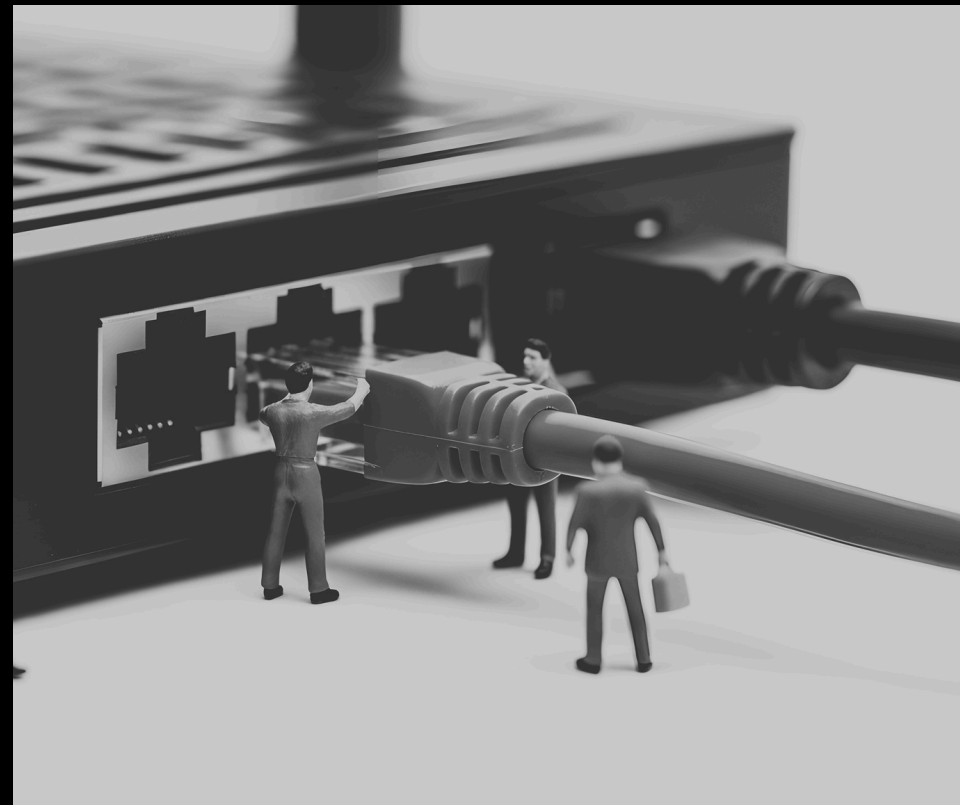
ROADMAP

X

Medium



CONTACT US



Telegram

safeonechain.com